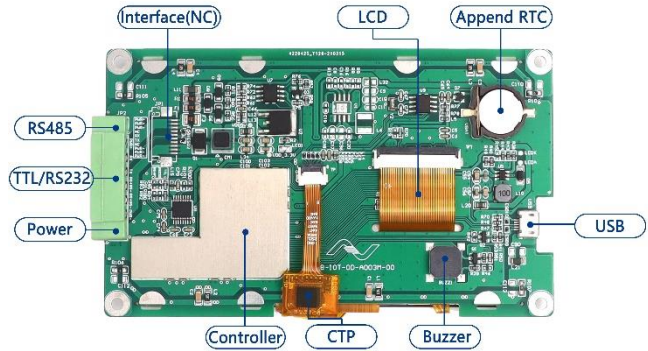


UART TFT Panel

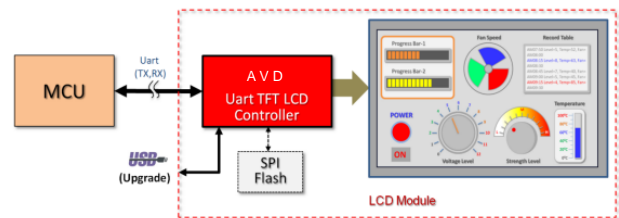
SDM-L768043CN-A0-S is high performance UART serial module with **4.3" Capacitive touch panel**, integrated high performance UART TFT serial controller. The main function is to provide UART serial communication, so that the host MCU can easily transfer the content to be displayed to the TFT driver through simple command.



Feature

- Build-in 32Bit MCU、64KB Flash、8KB SRAM
- Embedded 128Mb Display RAM
- Provide Geometric Graphic feature: Line, Rectangle, Triangle, Polygon, Poly-Line, Circle, Ellipse, Arc, Rounded-Rectangle, Circle-Rectangle and etc.....
- Provide 2D display function: Horizontal/Vertical Flip, Mirror and Rotation, multiple display buffer, wake-up display, PIP, Virtual display, initial display, color bar, etc....
- Provide four User-defined 32*32 Pixels Graphic Cursor, Character and size
- Defaulted 480*272 pixel resolution, support customized under 1280*1024pixel(included)
- Assortative UI-Editor software
- Defaulted 5V DC, support customized power input
- Defaulted 64M Flash storage, support customized storage
- Defaulted TTL/RS232 interface, support customized RS485 interface
- Defaulted RTC function, support optional
- Defaulted buzzer function, support optional
- Defaulted Capacitive Touch Panel, support customized Resistive Touch Panel
- Support UART, support USB2.0 upgrade

Application Block Diagram



Application Field

The powerful performance of **SDM-L768043CN-A0-S** is suitable for embedded systems with TFT-LCD display, such as home appliances, industrial control, electronic instruments, medical equipment, human-machine interface, industrial equipment, testing equipment, etc.

