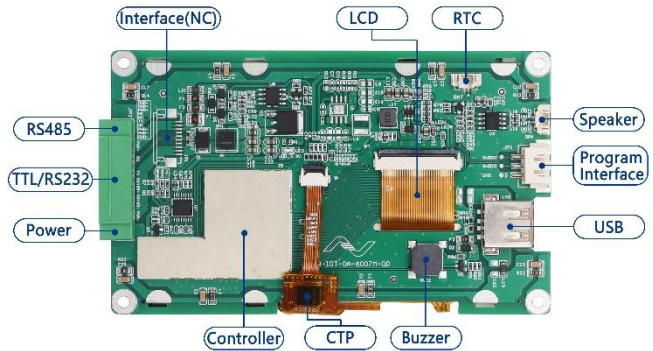


High Performance UART TFT Panel

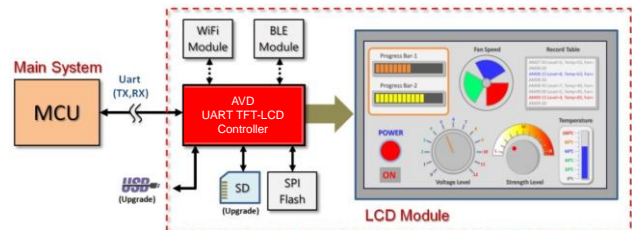
SDM-L769043CN-A0-S is high performance UART serial module with 4.3" Capacitive touch panel, which integrates Cortex-M4 MCU and 2D TFT graphical display accelerators. The main function is to provide UART serial communication, so that the host MCU can easily transfer the content to be displayed to the TFT driver through simple command.



Feature

- Build-in M4 MCU, 512KB Flash, 512KB SRAM
- Embedded 128Mb Display RAM
- Provide Geometric Graphic feature and 2D graphical display accelerators
- Provide SCI*3 and SPI*2 interface
- Assortative UI-Editor software
- Defaulted 480*272 pixel resolution, support customized under 1280*1024pixel(included)
- Defaulted 5V DC, support customized power input
- Defaulted 1Gb Flash storage, support customized storage
- Defaulted TTL/RS232 interface, support customized RS485 interface
- Defaulted RTC function, support optional
- Defaulted buzzer function, support optional
- Defaulted DAC audio output, support optional
- Defaulted Capacitive Touch Panel, support customized Resistive Touch Panel
- Support UART, USB2.0/SD card, support USB2.0 upgrade program and SPI data
- Support WIFI/BT module

Application Block Diagram



Application Field

The powerful performance of **SDM-L768043CN-A0-S** is suitable for embedded systems with TFT-LCD display, such as home appliances, industrial control, electronic instruments, medical equipment, human-machine interface, industrial equipment, EV-charger pile, testing equipment, etc.

